

Application Form for the European Green Capital Award 2022



European Green Capital Award 2022

Application Form

Please complete your submission for the EGCA 2022 Award in this Application Form. **All sections must be answered** and all questions should be addressed. In the instance that an applicant cannot provide an answer to a question, reasons must be provided in the relevant section.

Text included in square brackets *[EXAMPLE]* should be deleted and replaced with the applicant's response to each respective section. Do not delete the questions in the application form.

Please note, The 'City Introduction and Context' section does not form part of the overall assessment however it is a key component of the application and therefore must be completed. This section sets the scene for the application as a whole in the context of historical, geographic, socio-economic and political constraints, contentious infrastructure/environmental projects and initiatives, and provides the Expert Panel with a clear insight into the factors influencing the city's development and environmental quality.

All 12 indicators carry equal weight. Within each indicator, sections A, B and C are also equally weighted.

Word exceedances will not be accepted and applicants must complete the Word Count Check at the end of each Indicator to verify that their response is within the word limits outlined in the application form. This word count is a tool for cities to check that word exceedances have not occurred and ensure that answers are not left incomplete.

Application Form for the European Green Capital Award 2022

Applicants must read the Guidance Note before completing their application and consult this document while undertaking their responses.

City Introduction and Context

Give an overview of the city and a general background to the application, including examples of social and economic sustainability in the city.

Discuss positive and negative factors that have influenced the quality of the environment within the city and its surrounding area.

Provide a description of the key environmental challenges which the city faces including historical, geographical and/or socio-economic factors which have influenced the city's development.

The city's infrastructure plan should be briefly explained.

Applicants are advised to include any former or outstanding environmental legal proceedings in this section.

Please provide the following two maps :

- Map 1 should show the layout of urban areas, geographical and other features across the city;
- Map 2 should show your city in the context of the wider surrounding area.

Please also complete the following table:

Table 1: Benchmarking Data - City Introduction and Context

Indicator		Units	Year of data
Population	771,069	Number of inhabitants	2018
Area	327	km ²	2018
Population Density	2358	Inh/km ²	2018
GDP	20,088	€/capita	2016
Köppen climate classification	Dfb		

(max. 1,000 words and five graphics, images or tables plus the two requested maps as detailed above)

Krakow

THE CITY'S INFRASTRUCTURE PLAN



Krakow

THE CITY AND ITS CONTEXT

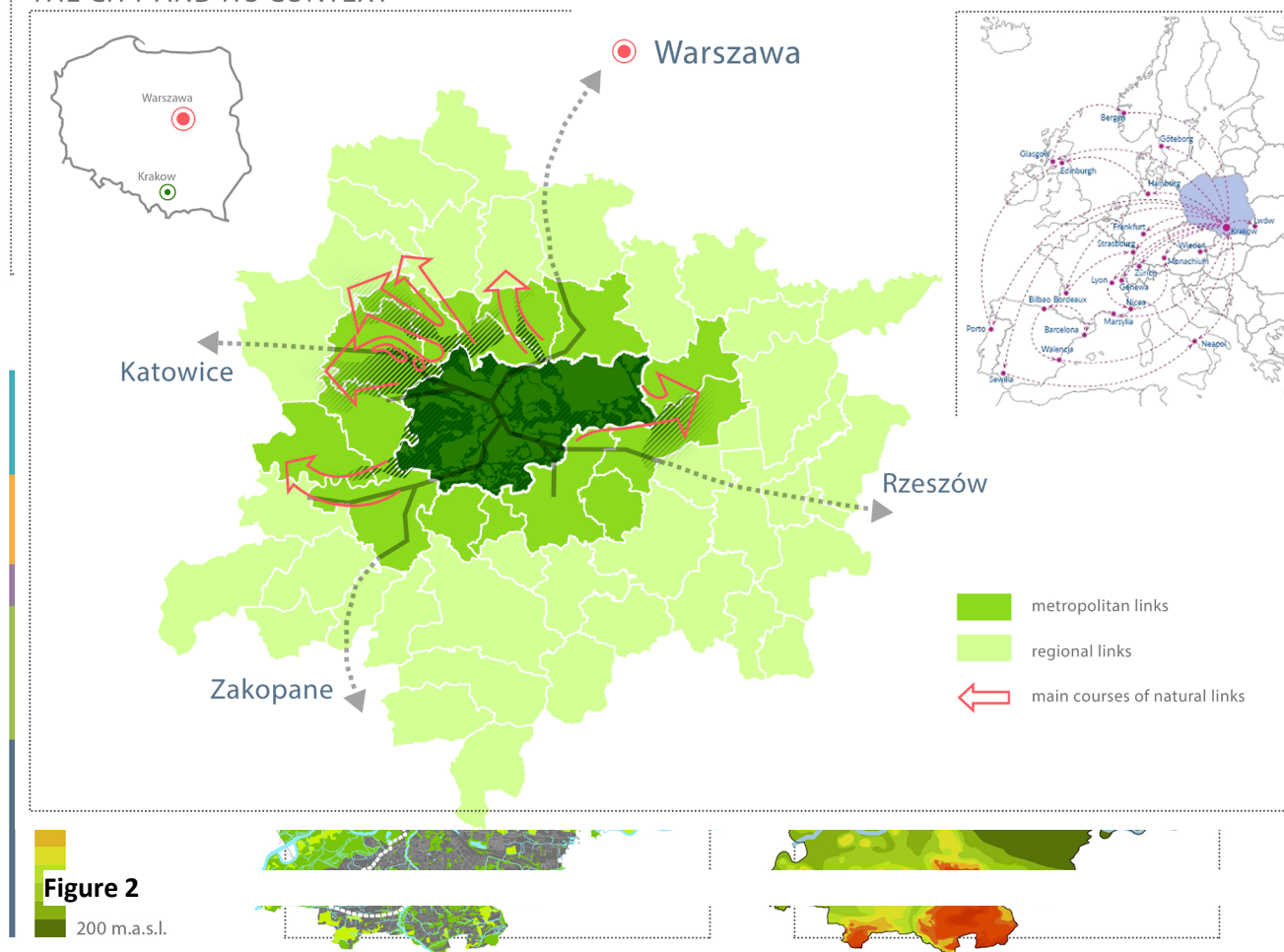


Figure 1

Application Form for the European Green Capital Award 2022

Krakow is unique by all measures: the Royal Capital of Poland, architectural wonder, UNESCO World Heritage site, visited by millions of tourists, and cradle of Polish academic life. Its Jagiellonian University is the eighth oldest in the world. Today Krakow is Poland's second largest and most populous city, a vibrant metropolis with an ever-growing population.

Krakow proves that intensive city development can be aligned with a respect for historical heritage. No open-air museum, accompanying Krakow's development is an enthusiastically implemented range of programmes in combating smog, waste segregation, protection of water resources, spending free time with nature, developing modern transport, and supporting renewable energy sources (IES).

Application Form for the European Green Capital Award 2022



Figure 3 Krakow the city

Application Form for the European Green Capital Award 2022

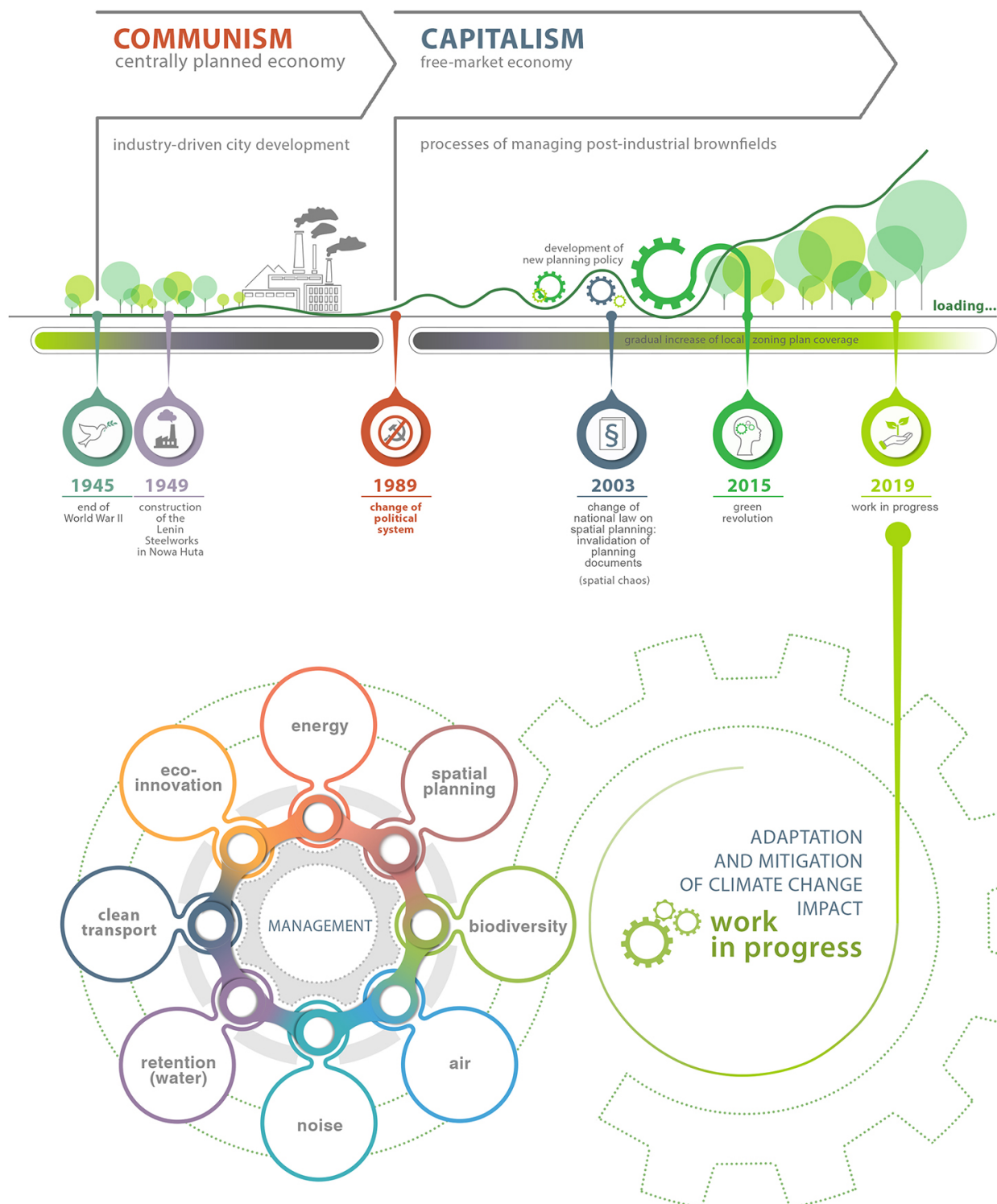


Figure 4 Urban infrastructure management

Application Form for the European Green Capital Award 2022

Word Count Check

Please complete the below word count check for City Introduction and Context.

As per the Guidance Note (Annex 2 of the Rules of Contest), the word count includes text in graphics/tables and the body of text. The word count excludes text in the original application form, captions and text in Table 1: Benchmarking Data - City Introduction and Context.

Section	Number of words in graphics/tables	Number of words in body of text	Total number of words in graphics/tables and body of text	Max. words
Introduction	22	924	952	1,000